



Control unit for DURAVISION LED lights.

Black aluminium cabinet, with glass front plate.

Quick installation, wall mounting bracket and push-in connectors reduce installation time and effort.

Stable 12VAC output regardless of the voltage input.

Connected with our **DURA Cloud App** by Bluetooth and Wi-Fi.

OneTouch LED, indicates the state of the controller.
Push the OneTouch LED, to switch the LED lights ON or OFF.

Basic **ON/OFF communication technology**, for all DURAVISION lights.

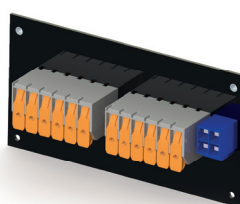
Advanced and unique **DuraNet Communication Technology*** in combination with compatible DURAVISION Lights:

- Free choice of colour
- Dimming
- LINK Touch compatible, if the option LoRa module is installed
- RS485/DMX512 compatible, if the option RS485/DMX512 module is installed
- Automatic synchronisation

An extension board with six additional connectors for LED lighting is available as an optional add-on for the LINK One.

Extension board

6 additional connections
for LED lighting



ACCS-LINK-005

DURA Cloud App

p. 92



*** DuraNet Communication Technology**
Unique communication protocol over the power cable. Allows full control of connected Duratech products with a single cable.

Technical Specifications

PRODUCT CODE		LINK-ONE-120
Type of control DURAVISION		ON/OFF & DuraNet
DURA Cloud App		✓
Bluetooth BLE		✓
Wi-Fi 2,4GHz		✓
LINK Touch compatible		Optional via LoRa module
Nominal input voltage	VAC	230
Output power	VA	120
Output voltage (SELV)	VAC	12
Relay contacts		Optional via LoRa module
RS485/DMX512		Optional via RS485/DMX512 module
IEC protection class		Class I
IP class		IP54
Unit dimensions (L*W*H)	mm	345*240*66
Net weight	kg	2,44
Warranty	year	2

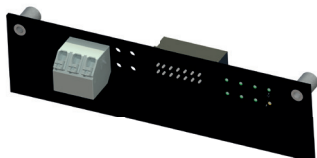
Option modules

Only 1 option module can be installed.

RS485/DMX512 MODULE

ACCS-LINK-004

- Connect the LINK One to the home automation system via the RS485/DMX512 module.
- Use the RS485/DMX512 module to connect several controllers to operate as one.



LORA MODULE

ACCS-LINK-003

The LoRa module enables wireless communication between the LINK One controller and the remote controls LINK Touch and TX868.

The module has 2 relay contacts to control external devices, such as garden lights or pool covers.

The antenna can be extended using the 10-metre extension cable (ACCS-LINK-001).



LINK TOUCH p. 94



TX868



ACCS-LINK-001

To combine with

LED LIGHTING

VISION Spectra DVM p. 10

VISION Spectra DVS p. 12

VISION Adagio Pro p. 14

VISION Allegro p. 16

VISION Pro p. 18

VISION Moonlight p. 40